

# Wild Earth Travel

*Small Ships, Big Adventures*

**wildearth-travel.com**

**info@wildearth-travel.com**

## 13 DAYS LUXURY ANTARCTICA EXPEDITION - PUERTO WILLIAMS TO PUERTO WILLIAMS

Antarctica is the most alien place on Earth. It is truly like walking on another planet; its agelessness and mysteriousness has captivated explorers for centuries. Now it is your turn to discover this white continent during this 10-day trip departing from Puerto Williams. After traversing the legendary Drake Passage, get ready for five days of exploration and adventure that will see you fascinated by the wildlife, history and landscapes of this amazing place.



### ITINERARY

#### Days 0 - 1 - Pre Cruise & Puerto Williams

- \_ \*\*Pre Cruise Benefits\*\* \_
- \_ \*\*Private Executive Transfers\*\* \_
- \_ \*\*International flights - Economy class\*\* \_
- \_ \*\*or Business Class upgrade\*\* \_
- \_ \*\*Airport transfers\*\* \_

Wild Earth Travel

*Small Ships, Big Adventures*

**0800 945 3327** (within New Zealand) | +64 (0) 3 365 1355 | **1800 107 715** (within Australia)

info@wildearth-travel.com | **wildearth-travel.com**

# Wild Earth Travel

*Small Ships, Big Adventures*

**wildearth-travel.com**

**info@wildearth-travel.com**

\_ \*\*Hotel\*\* \_

\_ \*\*In-country flights/Group flights\*\* \_

Puerto Williams is a Chilean city located on Navarino Island on the southern shores of the Beagle Channel. It claims to be the "southernmost city in the world", however owing to its small size - 2500 residents approximately - the much larger Argentinean city of Ushuaia, which sits on the northern side of the same channel, also claims that title. The surrounding scenery is magnificent. The wild windswept mountains rise above the tree line and are regularly dusted with snow. The city itself has the dramatic backdrop called "Dientes de Navarino" (literally "teeth of Navarino"), which rival the famous Torres del Paine further to the north. The area was originally used by the Yaghan people, hunter-gatherers who despite enduring the harsh regional climate, could not weather the arrival of Europeans. The current city was established as a naval base in 1953 and honours the British-Chilean naval commander John Williams Wilson of the 16th century. Initially it served to protect territorial possessions and fishing rights of the area, as well as offering logistical support to Antarctic bases. More recently it has become a departure point for scientific and tourism trips to the Antarctic region. In contrast to the bustle and traffic of a very commercial Ushuaia, Puerto Williams offers a quieter, more relaxed experience. It charms the visitor with a small village feel, complete with rustic buildings and the homely smell of drifting wood smoke. A haven of peace at the end of the world.

## Days 2 - 3 - Drake Passage

Sailing the legendary Drake Passage is an experience that few are ever lucky enough to experience. The southern tip of the Americas already feels like a wild enough environment - but the sensation of watching the distant cliffs of the peninsular known as the 'End of the World' fade into the horizon, is one that's equal parts epic, eerie and magical. Set sail, to slowly drop off the bottom of the map from Cape Horn, and voyage on an expedition down into the icy underworld of Antarctica. Drake Passage is an extraordinary voyage of romantic ocean faring legend, as you aim for Antarctica's icy realm. On arrival, skyscraper sized icebergs salute you, as you traverse the waters of this continent where snow and ice dwelling creatures like penguins and whales roam undisturbed. Your first sight of this most-unexplored place will most likely be the South Shetland Islands. Walk in the footsteps of some of history's greatest and bravest explorers as you explore famed, snow-covered landmasses like Elephant and Deception Island. If the journey across Drake Passage sounds daunting, don't worry - even in rough seas you're never alone, and will often be accompanied on this spine-tingling adventure by soaring

albatrosses and maybe even a protective pod of humpbacks and hourglass dolphins or two. Converging warm and cool ocean currents attract some spectacular animal life to the passage. If this is your first visit to this magical continent, you'll also want to familiarise yourself with our blog for first timers to Antarctica.

## Day 4 - Antarctic Sound

Few voyages ignite the imagination like a journey down to one of the planet's most remote, extreme and enchanting wilderness, Antarctica. An adventure in its purest form, only a handful of people will ever be lucky enough to experience the majestic beauty of these monochrome landscapes first-hand. The Antarctic Sound will be one of your first encounters of this whitewash kingdom, located at the northerly tip of the Antarctic Peninsula - which sprawls up like a tentacle towards Tierra del Fuego, South America's most southerly point, otherwise known as the 'End of the World'. Taking its name from the first ship to brave the passageway between the peninsular and the Joinville Island groups back in 1902, the Sound is a raw, sensory assault of imposing iceberg slabs, broken away from the disintegrating Larsen Ice Shelf. Come face-to-face with stadium-sized islands of ice and meet the extraordinary birdlife that call this whitewash kingdom home. Watch on, as colonies of Gentoo penguins hop around, and cape petrels sweep overhead, as the continent's unique wildlife thrives around you. If you're planning your first venture into Antarctica, you'll want to brush up on your photography skills in advance, to capture this unforgiving continent in all of its unrestrained glory. Read our blog for tips on how to ensure that your photos do justice to the adventure of a lifetime.

## Days 5 - 7 - Antarctic Peninsula

The Antarctic Peninsula unravels upwards towards South America, reaching out a beckoning finger to the adventurous, who dare to explore this untamed realm. Stretching up from the heart of the world's southernmost continent, the Antarctic Peninsula lies a mere 620 mile from Tierra del Fuego and, for many, offers a spectacular first taste of the snow-blanketed landscapes and colossal ice sculptures, which make up Earth's least-explored continent. Unseen by humans until 1820 - a blink of an eye ago in relative terms - this is an adventure sure to make your hairs stand on end, as you experience the thrill of the truly unknown and extraordinary. The vast peninsula is sprinkled with research bases, which are at the frontline of human scientific endeavour, pushing to study and understand this unique landscape, its exceptional wildlife, and the impact that humans are having on this pristine continent. Witness cathedral-sized icebergs up close, and blue-hued glaciers, slowly

Wild Earth Travel

*Small Ships, Big Adventures*

**0800 945 3327** (within New Zealand) | +64 (0) 3 365 1355 | **1800 107 715** (within Australia)

info@wildearth-travel.com | **wildearth-travel.com**



# Wild Earth Travel

*Small Ships, Big Adventures*

**wildearth-travel.com**

**info@wildearth-travel.com**

slipping from imposing locations like Hope Bay. Blanched mountain peaks cover the peninsula, and you'll find thousands of adorable Adelie penguin pairs thriving undisturbed in this peninsula's unique setting.

## Day 8 - South Shetland Islands

The ice-coated Antarctic Peninsula forms perhaps the most accessible region of mainland Antarctica, lying a mere 480-miles away from South America, across the fabled waters of Drakes Passage. Lying close to the northwestern tip of the Antarctic Peninsula, separated by the Bransfield Strait, the South Shetland Islands fall under the jurisdiction of the Antarctic Treaty, suspending claims on their sovereignty. Several countries maintain research bases here, and with plump elephant seals, and crowds of Gentoo, Chinstrap and Adelie Penguins also calling the islands home, it can even feel a little crowded at times. King George Island is the largest and most hospitable island, hosting the majority of the research stations - some of which are populated all-year-round by tiny, hardy crews. Don't be fooled though, these islands offer extraordinary adventure in one of the most remote locations on earth. The triple peaks of Mount Foster tower above the archipelago, and you'll feel your heart pumping a little quicker, as you sail into the core of Deception Island's magnificent collapsed volcano caldera. Hike the luna landscapes within, and even dip into the improbably warm, geothermally-heated waters of Pendulum Cove. Elephant Island, meanwhile, is written deep into the annals of Antarctic expedition legend, as the site where Ernest Shackleton and the stricken crew of the Endurance miraculously survived a harsh Antarctic winter, in 1916.

## Day 9 - Drake Passage

Sailing the legendary Drake Passage is an experience that few are ever lucky enough to experience. The southern tip of the Americas already feels like a wild enough environment - but the sensation of watching the distant cliffs of the peninsula known as the 'End of the World' fade into the horizon, is one that's equal parts epic, eerie and magical. Set sail, to slowly drop off the bottom of the map from Cape Horn, and voyage on an expedition down into the icy underworld of Antarctica. Drake Passage is an extraordinary voyage of romantic ocean faring legend, as you aim for Antarctica's icy realm. On arrival, skyscraper sized icebergs salute you, as you traverse the waters of this continent where snow and ice dwelling creatures like penguins and whales roam undisturbed. Your first sight of this most-unexplored place will most likely be the South Shetland Islands. Walk in the footsteps of some of history's greatest and bravest explorers as you explore famed, snow-covered landmasses like Elephant and Deception Island. If the journey across Drake

Passage sounds daunting, don't worry - even in rough seas you're never alone, and will often be accompanied on this spine-tingling adventure by soaring albatrosses and maybe even a protective pod of humpbacks and hourglass dolphins or two. Converging warm and cool ocean currents attract some spectacular animal life to the passage. If this is your first visit to this magical continent, you'll also want to familiarise yourself with our blog for first timers to Antarctica.

## Days 10 - 11 - Puerto Williams

Puerto Williams is a Chilean city located on Navarino Island on the southern shores of the Beagle Channel. It claims to be the "southernmost city in the world", however owing to its small size - 2500 residents approximately - the much larger Argentinean city of Ushuaia, which sits on the northern side of the same channel, also claims that title. The surrounding scenery is magnificent. The wild windswept mountains rise above the tree line and are regularly dusted with snow. The city itself has the dramatic backdrop called "Dientes de Navarino" (literally "teeth of Navarino"), which rival the famous Torres del Paine further to the north. The area was originally used by the Yaghan people, hunter-gatherers who despite enduring the harsh regional climate, could not weather the arrival of Europeans. The current city was established as a naval base in 1953 and honours the British-Chilean naval commander John Williams Wilson of the 16th century. Initially it served to protect territorial possessions and fishing rights of the area, as well as offering logistical support to Antarctic bases. More recently it has become a departure point for scientific and tourism trips to the Antarctic region. In contrast to the bustle and traffic of a very commercial Ushuaia, Puerto Williams offers a quieter, more relaxed experience. It charms the visitor with a small village feel, complete with rustic buildings and the homely smell of drifting wood smoke. A haven of peace at the end of the world.

## Day 12 - Post Cruise

\_\_ **\*\*Post Cruise Benefits\*\*** \_\_  
\_\_ **\*\*In-country flights/Group flights\*\*** \_\_  
\_\_ **\*\*Hotel\*\*** \_\_  
\_\_ **\*\*Airport transfers\*\*** \_\_  
\_\_ **\*\*International flights - Economy class\*\*** \_\_  
\_\_ **\*\*or Business Class upgrade\*\*** \_\_  
\_\_ **\*\*Private Executive Transfers\*\*** \_\_

Wild Earth Travel

*Small Ships, Big Adventures*

**0800 945 3327** (within New Zealand) | +64 (0) 3 365 1355 | **1800 107 715** (within Australia)

info@wildearth-travel.com | **wildearth-travel.com**



# Wild Earth Travel

*Small Ships, Big Adventures*



**wildearth-travel.com**

**info@wildearth-travel.com**

Please Note:

Itineraries are subject to change.



**Wild Earth Travel**

*Small Ships, Big Adventures*

**0800 945 3327** (within New Zealand) | +64 (0) 3 365 1355 | **1800 107 715** (within Australia)

info@wildearth-travel.com | **wildearth-travel.com**

# Wild Earth Travel

*Small Ships, Big Adventures*

**wildearth-travel.com**

**info@wildearth-travel.com**

## YOUR SHIP: SILVER CLOUD

<b>YOUR SHIP:</b>	<b>Silver Cloud</b>
<b>VESSEL TYPE:</b>	<b>Luxury Expedition</b>
<b>LENGTH:</b>	<b>157 m</b>
<b>PASSENGER CAPACITY:</b>	<b>200/260</b>
<b>BUILT/REFURBISHED:</b>	<b>1994 Refurbished &amp; Rebranded</b>

After extensive refurbishment, \_Silver Cloud\_ will be the most spacious and comfortable ice class vessel in expedition cruising. Her large suites, her destination itineraries and her unparalleled service make her truly special. Her five dining options will tantalise your taste buds and as 80% of her suites include a veranda, watching a breaching whale or a few cavorting penguins has never been so personal. Broad sweeping decks with multiple open spaces and a swimming pool complete what is surely the most distinctive expedition ship sailing today.

A limited number of guests, particularly with just 200 in polar waters, mean that \_Silver Cloud\_ has the highest space to guest and crew to guest ratios in expedition cruising. With her 18 zodiacs, possibilities are almost limitless with ship-wide simultaneous explorations. Finally, a team of 19 passionate and dedicated experts are always at hand to ensure your voyage is enhanced every step of the way.

DECK 09 - Observation Lounge, Jogging Track

DECK 08 - Pool, Pool Bar, Hot Rocks, The Panorama Lounge, The Connoisseur's Corner

DECK 07 - La Terrazza, The Spa at Silversea, Beauty Salon, The Library

DECK 06 - Lecture Theatre, The Fitness Centre, Reception/Guest Relations, Expedition Desk

DECK 05 - The Bar, Boutique, Casino

DECK 04 - Main Restaurant, Le Champagne, Launderette



Launderette



# Wild Earth Travel

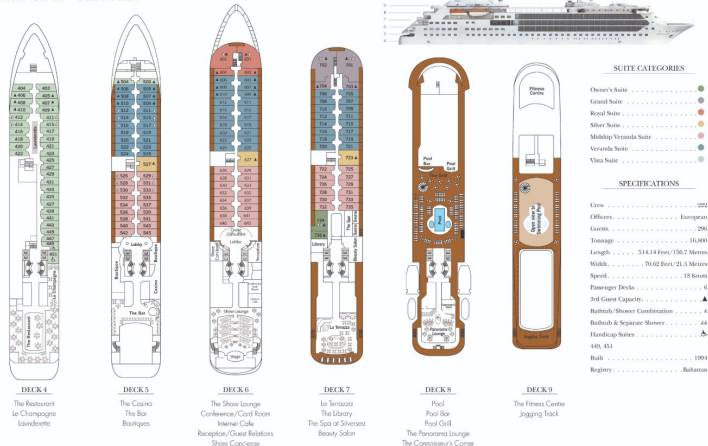
*Small Ships, Big Adventures*

[wildearth-travel.com](http://wildearth-travel.com)

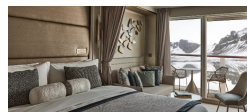
[info@wildearth-travel.com](mailto:info@wildearth-travel.com)

## INSIDE YOUR SHIP

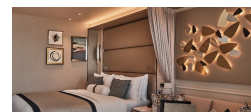
Silver Cloud - DECK PLAN



### Classic Veranda



### Deluxe Veranda



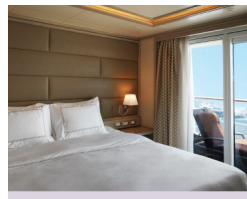
### Grand 1 Bedroom



### Grand 2 Bedroom



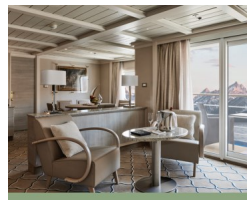
### Medallion



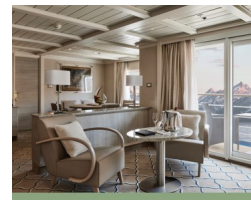
### Midship Veranda



### Owner 1 Bedroom



### Owner 2 Bedroom



Wild Earth Travel

*Small Ships, Big Adventures*

0800 945 3327 (within New Zealand) | +64 (0) 3 365 1355 | 1800 107 715 (within Australia)

[info@wildearth-travel.com](mailto:info@wildearth-travel.com) | [wildearth-travel.com](http://wildearth-travel.com)

# Wild Earth Travel

*Small Ships, Big Adventures*

**wildearth-travel.com**

**info@wildearth-travel.com**

## PRICING

### 25-Oct-2025 to 05-Nov-2025

Vista	24100 AUD pp
Medallion	33400 AUD pp
Silver	36500 AUD pp
Royal 1 Bedroom	39900 AUD pp
Grand 1 Bedroom	43600 AUD pp
Owner 1 Bedroom	47800 AUD pp
Royal 2 Bedroom	87300 AUD pp
Grand 2 Bedroom	93000 AUD pp
Owner 2 Bedroom	98100 AUD pp
Midship Veranda	0 pp
Veranda	0 pp

### 21-Nov-2025 to 02-Dec-2025

Classic Veranda	30000 AUD pp
Superior Veranda	32500 AUD pp
Deluxe Veranda	33600 AUD pp
Premium Veranda	34500 AUD pp
Silver	39600 AUD pp
Grand 1 Bedroom	71600 AUD pp
Owner 1 Bedroom	94200 AUD pp

### 25-Nov-2025 to 06-Dec-2025

Vista	27200 AUD pp
Veranda	29100 AUD pp
Midship Veranda	29900 AUD pp
Medallion	35200 AUD pp
Silver	36800 AUD pp
Royal 1 Bedroom	40200 AUD pp
Grand 1 Bedroom	44000 AUD pp
Owner 1 Bedroom	48100 AUD pp
Royal 2 Bedroom	66400 AUD pp
Grand 2 Bedroom	70200 AUD pp
Owner 2 Bedroom	72600 AUD pp

### 01-Dec-2025 to 12-Dec-2025

Classic Veranda	30000 AUD pp
Superior Veranda	32500 AUD pp
Deluxe Veranda	33600 AUD pp
Premium Veranda	34500 AUD pp
Silver	39600 AUD pp
Grand 1 Bedroom	71600 AUD pp
Owner 1 Bedroom	94200 AUD pp

# Wild Earth Travel

*Small Ships, Big Adventures*

[wildearth-travel.com](http://wildearth-travel.com)

[info@wildearth-travel.com](mailto:info@wildearth-travel.com)

## PRICING

### 10-Dec-2025 to 21-Dec-2025

Vista	28000 AUD pp
Medallion	35600 AUD pp
Silver	38900 AUD pp
Royal 1 Bedroom	42600 AUD pp
Grand 1 Bedroom	46600 AUD pp
Owner 1 Bedroom	51000 AUD pp
Royal 2 Bedroom	67800 AUD pp
Grand 2 Bedroom	71800 AUD pp
Owner 2 Bedroom	76200 AUD pp
Veranda	0 pp
Midship Veranda	0 pp

### 11-Dec-2025 to 22-Dec-2025

Classic Veranda	30600 AUD pp
Superior Veranda	33100 AUD pp
Deluxe Veranda	34300 AUD pp
Premium Veranda	35200 AUD pp
Silver	40400 AUD pp
Grand 1 Bedroom	73000 AUD pp
Owner 1 Bedroom	96100 AUD pp

### 04-Feb-2026 to 15-Feb-2026

Classic Veranda	30700 AUD pp
Superior Veranda	33300 AUD pp
Deluxe Veranda	34500 AUD pp
Premium Veranda	35400 AUD pp
Silver	43700 AUD pp
Grand 1 Bedroom	78000 AUD pp
Owner 1 Bedroom	102300 AUD pp

### 21-Feb-2026 to 04-Mar-2026

Vista	27600 AUD pp
Medallion	40400 AUD pp
Silver	44000 AUD pp
Royal 1 Bedroom	47900 AUD pp
Grand 1 Bedroom	52300 AUD pp
Owner 1 Bedroom	57000 AUD pp
Royal 2 Bedroom	87300 AUD pp
Grand 2 Bedroom	93000 AUD pp
Owner 2 Bedroom	98100 AUD pp
Veranda	0 pp
Midship Veranda	0 pp





# Wild Earth Travel

*Small Ships, Big Adventures*



**wildearth-travel.com**

**info@wildearth-travel.com**

## PRICING

### 04-Mar-2026 to 15-Mar-2026

Classic Veranda	27000 AUD pp
Superior Veranda	29300 AUD pp
Deluxe Veranda	30400 AUD pp
Premium Veranda	31200 AUD pp
Silver	41200 AUD pp
Grand 1 Bedroom	70000 AUD pp
Owner 1 Bedroom	92500 AUD pp

### 08-Jan-2027 to 18-Jan-2027

Vista	28700 AUD pp
Veranda	30700 AUD pp
Midship Veranda	33800 AUD pp
Medallion	39200 AUD pp
Silver	49800 AUD pp
Royal 1 Bedroom	52800 AUD pp
Grand 1 Bedroom	60100 AUD pp
Owner 1 Bedroom	76100 AUD pp
Royal 2 Bedroom	80400 AUD pp
Grand 2 Bedroom	87700 AUD pp
Owner 2 Bedroom	101900 AUD pp

### 01-Feb-2027 to 12-Feb-2027

Vista	28400 AUD pp
Veranda	30500 AUD pp
Midship Veranda	33700 AUD pp
Medallion	38400 AUD pp
Silver	49000 AUD pp
Royal 1 Bedroom	52000 AUD pp
Grand 1 Bedroom	59300 AUD pp
Owner 1 Bedroom	75300 AUD pp
Royal 2 Bedroom	79500 AUD pp
Grand 2 Bedroom	86800 AUD pp
Owner 2 Bedroom	100900 AUD pp

**Wild Earth Travel**  
*Small Ships, Big Adventures*

**0800 945 3327** (within New Zealand) | +64 (0) 3 365 1355 | **1800 107 715** (within Australia)

info@wildearth-travel.com | wildearth-travel.com