

Wild Earth Travel

Small Ships, Big Adventures

wildearth-travel.com

info@wildearth-travel.com

ANTARCTICA BY HELICOPTER: CROSSING THE CIRCLE AND THE PENINSULA CRUISE

Crossing the Antarctic Circle at 66°30' is a polar milestone achieved by relatively few travelers. Our polar-obsessed expedition team has made this dream come true for modern-day adventurers for over 30 years. Because innovation is in our DNA, we wanted to make this experience even more memorable. The result is our brand-new 14-day Antarctica by Helicopter: Crossing the Circle & the Peninsula itinerary, which includes opportunities for guests to soar above the Antarctic landscape in one of Ultramarine's twin-engine helicopters.

Our goal is to maximize helicopter adventures throughout your voyage so you can experience perspectives of the 7th Continent no one else can offer. Your helicopter-supported excursions--included in the cost of the trip--feature multiple opportunities for heli flightseeing, as well as a heli landing. You'll learn what it's like to step out of a helicopter onto Antarctica and gaze upon polar landscapes previously only seen by a few fearless explorers and mountaineers.

Not only will you reach the Antarctic Circle, but you'll also explore the southern heart of the Antarctic Peninsula. And you'll experience it all from sea--and air. Get ready to embrace the pinnacle of polar adventures.



ITINERARY

Day 1 - Arrive in Buenos Aires, Argentina

Upon arriving in this splendid city, known for its vibrant Argentinian culture, European architecture and cosmopolitan vibe, you will independently transfer to your pre-expedition hotel night, included in your Charter Flight and Hotel

Wild Earth Travel

Small Ships, Big Adventures

0800 945 3327 (within New Zealand) | +64 (0) 3 365 1355 | 1800 107 715 (within Australia)

info@wildearth-travel.com | wildearth-travel.com



Wild Earth Travel

Small Ships, Big Adventures

wildearth-travel.com

info@wildearth-travel.com

Package.

Day 2 - Fly to Ushuaia and Embark

After an early breakfast at the hotel, the group will transfer to the airport and board our private charter flight to Ushuaia, Argentina. Upon arrival, you will be transferred to a central downtown location to enjoy some time on your own to explore this quaint port town before making your way to the designated meeting spot near the pier, where you will be transferred to the ship for embarkation. After a late afternoon embarkation, we will sail along the historic Beagle Channel, which transects the Tierra del Fuego archipelago in the extreme south of South America. Expect an air of anticipation as you depart-- the next time you see land, you'll be in the remote Antarctic wilderness.

Day 3 - Crossing the Drake: A Polar Rite of Passage

Crossing the legendary 800-km stretch of water is a must-do for many travelers. Prepare yourself for dramatic seascapes as you stand on the deck of Ultramarine and gaze at the water stretching beyond the distant horizon. Be on the lookout for dolphins, whales and seabirds, especially albatrosses, petrels and skuas as they glide over the sometimes rough waters. As the ship approaches the Antarctic Peninsula, keep your eyes peeled for your first glimpse of towering, multi-shaped icebergs.

Day 4 - At Sea With Polar Experts

Today, as we continue crossing the Drake Passage, we experience the Antarctic Convergence, where the warmer waters of the sub-Antarctic meet the cold Antarctic. Your days at sea are filled with presentations led by your Expedition Team on photography, wildlife, glaciology, and history. In between presentations, spend time on deck looking for wildlife or chatting with your shipmates over a drink at the bar.

Days 5 and 6 - South Shetland Islands and Antarctic Peninsula

The most common reaction upon reaching the Antarctic Peninsula is a sense of reverence and awe. The experience is beyond words, since few places are

as untouched and enduring as Antarctica. You will begin to appreciate why this region has long captivated the attention of explorers and travelers alike. Every visit to Antarctica, we witness something new or unexpected, which means that your expedition will be unlike any other-- creating a unique, personal experience. Each day, you will take Zodiac excursions from the ship to explore local bays, channels and landing sites. With wildlife always at the forefront of our minds, you will visit penguin rookeries, scout for humpback and minke whales, and search for a number of southern seal species, including the elusive leopard seal. Your Expedition Team will take care of you at each landing, whether you are exploring the Antarctic terrain, visiting a research station or consorting with penguin colonies. Chinstrap, Adelie and gentoo penguins are found here, along with five different species of seals. Zodiac cruising can offer opportunities to view some of the larger local marine mammals more intimately, such as Antarctic minke and humpback whales. Days 5 and 6 are also ideal times to experience Ultramarine's portfolio of helicopter-supported adventures exclusive to Quark Expeditions. Your days will be busy spotting wildlife and being mesmerized by the astounding beauty of Antarctica. Listening to the crackling and crumbling of icebergs and glaciers and watching penguins waddling on the beach will become your daily entertainment. That's in addition to the spectacular experience of soaring in a helicopter over the Antarctic landscape.

Days 7 to 9 - Explore the Antarctic Circle and the Southern Peninsula by water, land, and air

Helicopter operations in Antarctic are acutely weather-dependent. We have designed this itinerary so we can spend time each day in stunning locations that allow us to enjoy helicopter opportunities if the weather allows and, alternately, to maximize your experience of Antarctic wildlife, ice and landscapes when flying conditions are not favorable. Each day near the Antarctic Circle will showcase the flexibility and technical prowess of our industry-leading expedition team, pilots and crew, who will look for opportunities to experience Antarctica well beyond its coasts. As Ultramarine gains access to the Antarctic Circle, you'll have accomplished an impressive achievement as most expeditions to the Peninsula do not come close to navigating this far south. Toasting the first explorers who ventured here over a century ago, you can raise a glass and take pride in the knowledge you've reached part of the world visited by a relative few. Next on our itinerary are Crystal Sound and Marguerite Bay, which comprise the geographical theater of focus on this incredible venture into the "deep south" of Antarctica. After visiting some of the region's iconic penguin colonies and glacial features, we continue south into Crystal Sound to cross the Antarctic Circle. Crystal Sound is known for its massive expanse of steep mountains that rise directly out of

Wild Earth Travel

Small Ships, Big Adventures

0800 945 3327 (within New Zealand) | +64 (0) 3 365 1355 | 1800 107 715 (within Australia)

info@wildearth-travel.com | wildearth-travel.com



Wild Earth Travel

Small Ships, Big Adventures



wildearth-travel.com

info@wildearth-travel.com

the sea. We hope to visit Detaille Island and, weather-permitting, fly into the mountains of the Antarctic Peninsula at the Antarctic Circle. Our goal is to visit the British Antarctic Survey's historical hut, and the Adelie penguin colony of Detaillle Island. We also hope to Zodiac cruise in this area to see the colossal icebergs that formed from the glaciers fed by the snowfall in the coastal mountains of Antarctica. Seals frequently roam this coastal area. There will be time to marvel at the impressive topography, which features Castle Peak, a 2,380 meter (7,800foot) massif. If weather allows, we may add to our marine operations and embark on our flightseeing experiences. What you will have just seen from sea, you will now experience from the sky as you witness the vastness of Antarctica and Crystal Sound. Continuing further south, we'll set out toward Marguerite Bay, which is rich in human history, stunning geological features, and expansive ice fields. The bay is separated from Crystal Sound by Adelaide Island. Ice conditions permitting, we may be able to transit slowly through the narrow passage between the mainland and the island. This channel is known as The Gullet, known for pulsing currents that can lodge and dislodge ice throughout the summer months. Keep your eyes focused off-ship for potential marine mammal sightings. To the west of Adelaide Island, the 70-kilometer-long Fuchs Ice Piedmont stretches out like a long ice tongue to east Arrowsmith Peninsula with multiple peaks rising 1,800 to 2,100 meters (6,000 to 7000 feet). We also hope to explore Debenham Islands, named after Frank Debenham, a member of the advisory committee for the British Graham Land Expedition of 1934-37. The six main islands are named after Debenham's children.

Days 10 and 11 - Northbound Along the Peninsula

By now, your knowledge of Adelie, chinstrap and gentoo penguins will be matched by your ability to differentiate between a leopard, crabeater and Weddell seal. Terms like 'bergy bits' and 'pancake ice' will become part of your vocabulary. As you head north, Zodiac excursions will occupy your days, and your Expedition Team will continue looking out for species of seabirds, seals and whales that may have eluded us on this journey south.

Days 12 and 13 - Crossing the Drake Passage

As you recross the Drake Passage at the end of your expedition, rest assured you'll do so with a storehouse of memories to last a lifetime. You'll have experienced moments--soaring in a helicopter over remote parts of Antarctica being one of the most memorable--which few travelers can ever claim. Your Expedition Team will have a few remaining presentations for you--including the guest favorite, the end-of-voyage photoand-video compilation showcasing the

most unforgettable moments of your voyage. Remember to take advantage of Ultramarine's amenities, especially Tundra Spa & Sauna, on the final days onboard.

Day 14 - Disembark in Ushuaia and Fly to Buenos Aires

You will arrive in Ushuaia in the morning and disembark after breakfast --but the adventures aren't over. Your Charter Flight and Hotel Package includes your transfer to the airport for the return group charter flight to Buenos Aires.

Please note:

Itineraries are subject to change.

Wild Earth Travel

Small Ships, Big Adventures

0800 945 3327 (within New Zealand) | +64 (0) 3 365 1355 | 1800 107 715 (within Australia)

info@wildearth-travel.com | wildearth-travel.com

Wild Earth Travel

Small Ships, Big Adventures



wildearth-travel.com

info@wildearth-travel.com

YOUR SHIP: ULTRAMARINE

YOUR SHIP:	Ultramarine
VESSEL TYPE:	Expedition Ship
LENGTH:	128 metres
PASSENGER CAPACITY:	199
BUILT/REFURBISHED:	2019-2020

Hiking (Included), Lectures (Included), Camping (Optional), Sea Kayaking (Optional), Stand-Up Paddleboarding (Optional), Paddle Excursions (Optional), Cross Country Skiing (Optional), Mountaineering (Optional)

Ultramarine is designed to go beyond the familiar in polar exploration, to discover new places, and to immerse you in the best the region has to offer.

Equipped with two twin-engine helicopters, Ultramarine offers the most robust portfolio of adventure activities in the industry, the most spacious suites in its category, breathtaking public spaces, and more outdoor wildlife viewing spaces than other expedition ships its size. It also features an innovative mix of sustainability features that exceed all industry standards.

With all this and more, Ultramarine is set to deliver the ultimate polar expedition experience.

Cabin - Spacious Entryways, Personal Safes, Spa-inspired Bathrooms, Heated Bathroom Floors, Premium beds and bed linens, Convertible Beds, Individual Temperature Controls, HD Flatscreen Televisions, Oversized Windows With Sweeping Views, Electrical Supply: 220V

Aboard - 2 Dining Areas, 4 Bars, Panorama Lounge, Lecture Theater, Library, Polar Boutique, Spa & Fitness Center, Oceanview Sauna, Zodiac Hangar with 4 Embarkation Points, 2 Ready Rooms with Individual Lockers, Walkaround Deck, Bridge Activities - Flightseeing (Included), Zodiac Cruising (Included),



(Optional)

Wild Earth Travel

Small Ships, Big Adventures

0800 945 3327 (within New Zealand) | +64 (0) 3 365 1355 | 1800 107 715 (within Australia)

info@wildearth-travel.com | wildearth-travel.com

Wild Earth Travel

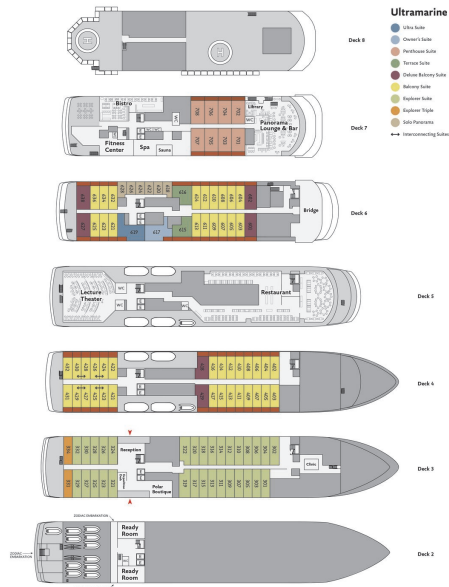
Small Ships, Big Adventures



wildearth-travel.com

info@wildearth-travel.com

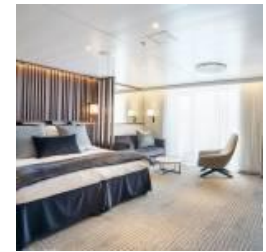
INSIDE YOUR SHIP



Balcony Suite



Deluxe Balcony Suite



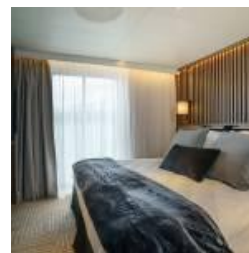
Explorer Suite



Explorer Triple



Owner's Suite



Penthouse Suite





Wild Earth Travel

Small Ships, Big Adventures



wildearth-travel.com

info@wildearth-travel.com

PRICING

16-Feb-2027 to 01-Mar-2027

Explorer Triple	26695 AUD pp
Solo Panorama	43995 AUD pp
Explorer Suite	53372 AUD pp
Balcony Suite	58812 AUD pp
Deluxe Balcony Suite	81790 AUD pp
Terrace Suite	84790 AUD pp
Penthouse Suite	91190 AUD pp
Owner's Suite	113190 AUD pp
Ultra Suite	125590 AUD pp

Wild Earth Travel

Small Ships, Big Adventures

0800 945 3327 (within New Zealand) | +64 (0) 3 365 1355 | 1800 107 715 (within Australia)

info@wildearth-travel.com | wildearth-travel.com



Wild Earth Travel

Small Ships, Big Adventures



wildearth-travel.com

info@wildearth-travel.com

SPECIAL OFFERS

Special offers and discounts are available. Online prices do not reflect the discounted rates. Terms and conditions apply. Please contact us for more details.



Wild Earth Travel

Small Ships, Big Adventures

0800 945 3327 (within New Zealand) | +64 (0) 3 365 1355 | **1800 107 715** (within Australia)

info@wildearth-travel.com | wildearth-travel.com