



# Wild Earth Travel

*Small Ships, Big Adventures*



**wildearth-travel.com**

**info@wildearth-travel.com**

## THE GREAT AUSTRAL LOOP - ANTARCTICA, SOUTH GEORGIA & FALKLANDS LUXURY EXPEDITION

Experience a magical Christmas with PONANT.

Discover the Southern Ocean as you have never seen it before! Embark on a 18-day polar expedition cruise to the highest latitudes, from the Falkland Islands to South Georgia and the immaculate lands of Antarctica.

Your expedition to the heart of the South Atlantic begins with the exploration of the Falkland Islands: as you sail in this archipelago of 200 islands, you will be escorted by sei whales. Composing the wild beauty of the shorelines are beaches of white sand, jagged cliffs, windswept moors and tall grass swaying with the wind.

Your ship will soon take to the seas once again, to reach the mountainous island of South Georgia. It is there, in the midst of gigantic glaciers, that Sir Ernest Shackleton miraculously ran aground during the famous Endurance Odyssey in 1916. Today, king penguins, elephant and fur seals that have taken over the black-sand beaches dominated by the tall peaks that reveal the Scotia Arc.

You will ultimately land on the frozen shores of the nearly inaccessible White Continent, Antarctica. White shades take on a thousand nuances as it covers the icebergs, glaciers, mountains and frozen sea all around you. You will be one of the rare few travellers to have laid eyes on this legendary land, the theatre of the greatest expeditions and the witness of the most extraordinary adventures. Above all, you are in the realm of the

**Wild Earth Travel**  
*Small Ships, Big Adventures*

**0800 945 3327** (within New Zealand) | +64 (0) 3 365 1355 | **1800 107 715** (within Australia)

info@wildearth-travel.com | **wildearth-travel.com**

# Wild Earth Travel

*Small Ships, Big Adventures*

**wildearth-travel.com**

**info@wildearth-travel.com**

penguins - Adelie, Gentoo, chinstrap - seals, whales and seabirds that accompany you on this unforgettable trip.



table trip.

## ITINERARY

### Day 1 USHUAIA

Capital of Argentina's Tierra del Fuego province, Ushuaia is considered the gateway to the White Continent and the South Pole. Nicknamed "El fin del mundo" by the Argentinian people, this city at the end of the world nestles in the shelter of mountains surrounded by fertile plains that the wildlife seem to have chosen as the ultimate sanctuary. With its exceptional site, where the Andes plunge straight into the sea, Ushuaia is one of the most fascinating places on earth, its very name evocative of journeys to the unlikely and the inaccessible...

### Day 2 AT SEA

During your day at sea, make the most of the many services and activities on board. Treat yourself to a moment of relaxation in the spa or stay in shape in the fitness centre. Depending on the season, let yourself be tempted by the swimming pool or a spot of sunbathing. This day without a port of call will also be an opportunity to enjoy the conferences or shows proposed on board, to do some shopping in the boutique or to meet the PONANT photographers in their dedicated space. As for lovers of the open sea, they will be able to visit the ship's upper deck to admire the spectacle of the waves and perhaps be lucky enough to observe marine species. A truly enchanted interlude, combining comfort, rest and entertainment.

### Day 3 NEW ISLAND & GRAVE COVE

This island with its distinctive jagged relief is located on the western edge of the Falkland Islands and is home to a tiny village of two families. Step onto the golden sand of its flower-lined beaches, beside which an old stone house still stands, and you'll feel like you've entered a natural paradise. A narrow pathway weaves around typical Falkland moorlands. Follow it and in under 20 minutes you'll find yourself at the heart of a colony of southern rockhopper penguins, black-browed albatross and imperial shags. It's the perfect opportunity to watch the albatross swoop down from the cliffs and skim the waves that crash against the rocks on the exposed side of the island. Make your way through the turbulent Woolly Gut strait and emerge in the stillness of Grave Cove. Located in the northern edge of the Falkland Islands, this bay owes its name to the vestiges of whalers' graves that overlook the beach. As you step off the boat and onto the white-sand beach, you might find yourself escorted by a few hospitable Commerson's dolphins, elegantly adorned in black and white. A stroll along the grassy dunes will lead you to a vast plain of lush green grass, tended by a few sheep. On the other side of the island you'll find one of the largest gentoo penguin colonies in the area. With some luck, you'll also glimpse a sea lion scouring the waves for his next meal.

### Days 4 - 5 AT SEA

During your day at sea, make the most of the many services and activities on board. Treat yourself to a moment of relaxation in the spa or stay in shape in the fitness centre. Depending on the season, let yourself be tempted by the swimming pool or a spot of sunbathing. This day without a port of call will also be an opportunity to enjoy the conferences or shows proposed on board, to do some shopping in the boutique or to meet the PONANT photographers in their

Wild Earth Travel

*Small Ships, Big Adventures*

**0800 945 3327** (within New Zealand) | +64 (0) 3 365 1355 | **1800 107 715** (within Australia)

info@wildearth-travel.com | **wildearth-travel.com**



# Wild Earth Travel

*Small Ships, Big Adventures*

**wildearth-travel.com**

**info@wildearth-travel.com**

dedicated space. As for lovers of the open sea, they will be able to visit the ship's upper deck to admire the spectacle of the waves and perhaps be lucky enough to observe marine species. A truly enchanted interlude, combining comfort, rest and entertainment.

## Days 6 - 8 SOUTH GEORGIA

Aboard your ship, discover South Georgia, a region formed by an underwater mountain chain that extends from the Andes to the Antarctic Peninsula. All the wildlife of the Far South can be found there: king and Gentoo penguins, elephant seals, fur seals... You might get the chance to discover the majestic glaciers of Gold Harbour and the vast plains of Fortuna Bay. If you are fortunate enough to land at Salisbury Plain, you can expect a wonderful spectacle: more than 300,000 king penguins, which you will recognise by the bright orange mark on their head and neck, have taken up residence there.

## Days 9 - 10 AT SEA

During your day at sea, make the most of the many services and activities on board. Treat yourself to a moment of relaxation in the spa or stay in shape in the fitness centre. Depending on the season, let yourself be tempted by the swimming pool or a spot of sunbathing. This day without a port of call will also be an opportunity to enjoy the conferences or shows proposed on board, to do some shopping in the boutique or to meet the PONANT photographers in their dedicated space. As for lovers of the open sea, they will be able to visit the ship's upper deck to admire the spectacle of the waves and perhaps be lucky enough to observe marine species. A truly enchanted interlude, combining comfort, rest and entertainment.

## Days 11 - 14 ANTARCTIC PENINSULA

Succumb to the magic of a place unlike any other. To this day, the mythical Antarctic Peninsula still holds real fascination and promises its visitors unforgettable moments. Throughout your adventure in this icy realm, you will find yourself in the heart of a spectacular decor in subtle shades of blue and white, surrounded by exceptional wildlife. Penguins, humpback whales, seals and giant petrels are at home here, as are elephant seals, fur seals, Antarctic minke whales, and orcas. Depending on which sites you will be lucky enough to visit, you may get the chance to observe them and share with them the beauty of these extreme parts. Each day, based on ice conditions, the Captain

and the Expedition Leader will suggest Zodiac® outings or landings to discover the infinite riches of the Antarctic Peninsula. Glaciers, ice floe, tabletop icebergs, mountain peaks that plunge straight into the sea, volcanic beaches, research stations, enchanting bays, and vestiges of the whaling industry: these are the faces of the Antarctic that will likely reveal themselves to you, in a hushed and surreal atmosphere. You will sail in the wake of Jean-Baptiste Charcot, Adrien de Gerlache and Sir Ernest Shackleton, great Antarctic explorers who, from the 19th century, set out to conquer these remote and uninhabited lands.

## Days 15 - 16 CROSSING THE DRAKE PASSAGE

If there is one place, one sea, one waterway dreaded by tourists, researchers and hardened seafarers alike, it is undoubtedly Drake Passage. Situated at the latitude of the infamous Furious Fifties winds, between Cape Horn and the South Shetland Islands, it is the shortest route to connect Antarctica to South America. Seasoned navigators will tell you that you must earn your visit to the White Continent! As the Antarctic convergence zone where cold currents rising up from the South Pole meet warmer equatorial water masses, Drake Passage harbours a very diverse marine fauna. Don't forget to look to the sky to catch a glimpse of elegant albatross and Cape petrels, playfully floating about in the wind around your ship.

## Days 17 - 18 USHUAIA

Capital of Argentina's Tierra del Fuego province, Ushuaia is considered the gateway to the White Continent and the South Pole. Nicknamed "El fin del mundo" by the Argentinian people, this city at the end of the world nestles in the shelter of mountains surrounded by fertile plains that the wildlife seem to have chosen as the ultimate sanctuary. With its exceptional site, where the Andes plunge straight into the sea, Ushuaia is one of the most fascinating places on earth, its very name evocative of journeys to the unlikely and the inaccessible...

### Please Note:

We are privileged guests in these extreme lands where we are at the mercy of weather and ice conditions. Landings on certain sites and the observation of certain wildlife cannot be guaranteed. They vary from day to day, making each PONANT cruise a unique experience. The Captain and the Expedition Leader



# Wild Earth Travel

*Small Ships, Big Adventures*



**wildearth-travel.com**

**info@wildearth-travel.com**

will make every effort to ensure that your experience is as rich as possible,  
while complying with the safety rules and instructions imposed by the IAATO.

**Wild Earth Travel**  
*Small Ships, Big Adventures*

**0800 945 3327** (within New Zealand) | +64 (0) 3 365 1355 | **1800 107 715** (within Australia)

info@wildearth-travel.com | **wildearth-travel.com**

# Wild Earth Travel

*Small Ships, Big Adventures*

**wildearth-travel.com**

**info@wildearth-travel.com**

## YOUR SHIP: L'AUSTRAL

<b>YOUR SHIP:</b>	<b>L'Austral</b>
<b>VESSEL TYPE:</b>	<b>Luxury Expedition / Cruise Ship</b>
<b>LENGTH:</b>	<b>142 metres</b>
<b>PASSENGER CAPACITY:</b>	<b>264 (200 in Antarctica)</b>
<b>BUILT/REFURBISHED:</b>	<b>2011</b>

This superb mega-yacht with 132 cabins is the result of the expertise of the Italian Fincantieri shipyard and French sophistication, as interpreted by designer Jean-Philippe Nuel. L'Austral has a unique atmosphere, a subtle blend of luxury, intimacy and well-being.

A sleek silhouette softened by elegantly smooth contours and large, arched windows opening up to the sea and the light: so many features come together to give L'Austral her distinctive shape. Precious materials, discreet elegance and a perfect balance between chic and casual, combine to make you feel as if you are on your own private yacht. A design blending tradition and innovation, where a nautical mood has been subtly recreated. Precious materials in smoothing neutral tones are brought to life with splashes of cheerful reds. So many personal touches create the spirit of a "private yacht".

### Cuisine

Loyal to the great French tradition, the haute cuisine on board is worthy of the finest restaurants, where discreet, attentive service is the hallmark.

Our two restaurants welcome you for breakfasts, lunch and dinner. The Gastronomic Restaurant, with a capacity of 268

persons, is situated on Le Liberte Deck and serves you French and international cuisine accompagnied by fine wine. On the Grill Restaurant, you will have the opportunity to eat outside and enjoy buffet lunch and themed dinner.

### Life On Board

Whether you want to join other guests in the theatre or games area (Wii™ consoles, etc), or relax on your own in a quiet corner of the library, L'Austral has been designed to meet the needs of every guest.

Everything has been done to preserve the independence of each guest to suit their personal tastes: lounges for lectures and shows, a spa in partnership with Sothys™, but also more intimate spaces such as the library and internet corner. Comfortable cabins, nearly all with private balcony, are available for families either as triples or as communicating cabins. There is also a games area with Wii™ consoles, children's menus, and a baby-sitting service. Just as if you were on a private yacht, your time is your own to do as you please.

Fitted with the latest equipment (Kinesis Wall, running machine) and in partnership with the famous

Sothys™ brand, the Beauty Centre on L'Austral welcomes you for some unforgettable moments of relaxation and pampering (beauty treatments, hairdresser).



Wild Earth Travel

*Small Ships, Big Adventures*

**0800 945 3327** (within New Zealand) | +64 (0) 3 365 1355 | **1800 107 715** (within Australia)

info@wildearth-travel.com | wildearth-travel.com



# Wild Earth Travel

*Small Ships, Big Adventures*



**wildearth-travel.com**

**info@wildearth-travel.com**

irdresser).

**Wild Earth Travel**

*Small Ships, Big Adventures*

**0800 945 3327** (within New Zealand) | +64 (0) 3 365 1355 | **1800 107 715** (within Australia)

info@wildearth-travel.com | **wildearth-travel.com**

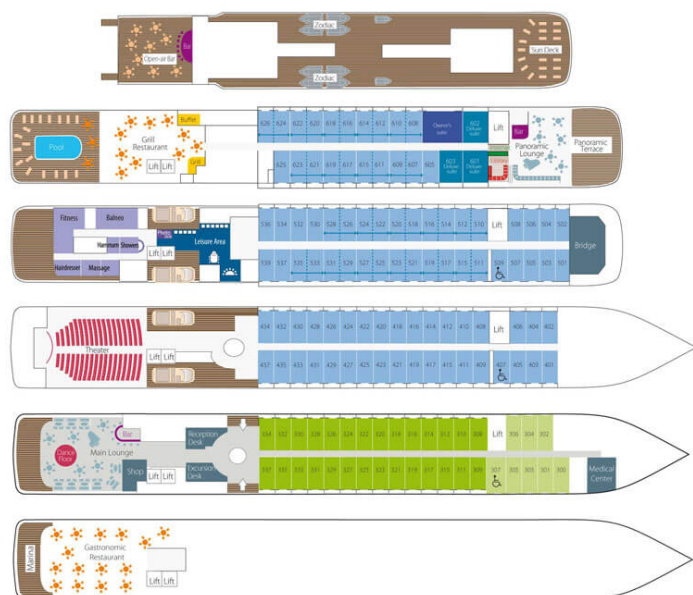
# Wild Earth Travel

*Small Ships, Big Adventures*

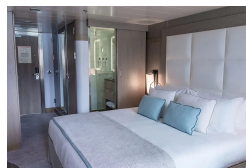
[wildearth-travel.com](http://wildearth-travel.com)

[info@wildearth-travel.com](mailto:info@wildearth-travel.com)

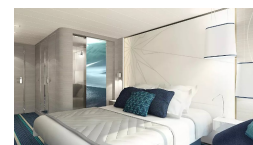
## INSIDE YOUR SHIP



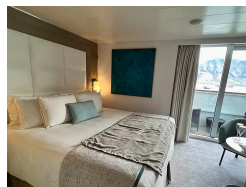
DeLuxe Stateroom



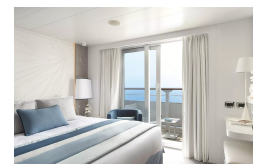
Deluxe Stateroom



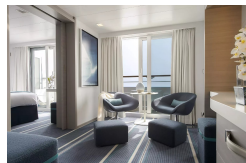
Deluxe Suite



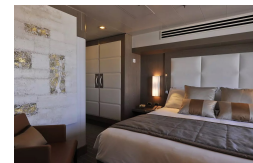
Grand Deluxe Suite



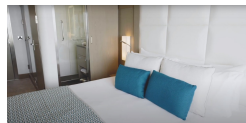
Grand Privilege Suite



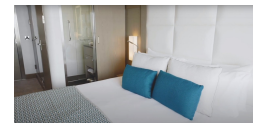
Owner's suite



Prestige Deck 4



Prestige Deck 5



Wild Earth Travel

*Small Ships, Big Adventures*

0800 945 3327 (within New Zealand) | +64 (0) 3 365 1355 | 1800 107 715 (within Australia)

[info@wildearth-travel.com](mailto:info@wildearth-travel.com) | [wildearth-travel.com](http://wildearth-travel.com)

# Wild Earth Travel

*Small Ships, Big Adventures*

**wildearth-travel.com**

**info@wildearth-travel.com**

## PRICING

### 20-Dec-2025 to 07-Jan-2026

Superior Stateroom	31720 AUD pp
DeLuxe Stateroom	33940 AUD pp
Prestige Stateroom - Deck 4	35540 AUD pp
Prestige Stateroom - Deck 5	36180 AUD pp
Prestige Stateroom - Deck 6	37130 AUD pp
Deluxe Suite	53040 AUD pp
Prestige Suite - Deck 5	55270 AUD pp
Prestige Suite - Deck 6	58140 AUD pp
Owner's suite	95140 AUD pp

Superior Stateroom	28390 AUD pp
DeLuxe Stateroom	30450 AUD pp
Prestige Stateroom - Deck 4	31910 AUD pp
Prestige Stateroom - Deck 5	32500 AUD pp
Prestige Stateroom - Deck 6	33400 AUD pp
Deluxe Suite	48140 AUD pp
Prestige Suite - Deck 5	50200 AUD pp
Prestige Suite - Deck 6	52870 AUD pp
Owner's suite	83520 AUD pp

### 24-Jan-2026 to 11-Feb-2026

Superior Stateroom	36190 AUD pp
DeLuxe Stateroom	38780 AUD pp
Prestige Stateroom - Deck 4	40640 AUD pp
Prestige Stateroom - Deck 5	41390 AUD pp
Prestige Stateroom - Deck 6	42490 AUD pp
Deluxe Suite	61070 AUD pp
Prestige Suite - Deck 5	63680 AUD pp
Privilege Suite	69240 AUD pp
Grand Deluxe Suite	84840 AUD pp
Grand Privilege Suite	87440 AUD pp
Owner's suite	90040 AUD pp

### 15-Feb-2026 to 05-Mar-2026

# Wild Earth Travel

*Small Ships, Big Adventures*

**wildearth-travel.com**

**info@wildearth-travel.com**

## PRICING

### 17-Nov-2026 to 04-Dec-2026

Superior Stateroom	25930 AUD pp
Deluxe Stateroom	27700 AUD pp
Prestige Deck 4	28940 AUD pp
Prestige Deck 5	29450 AUD pp
Prestige Deck 6	30190 AUD pp
Deluxe Suite	42730 AUD pp
Prestige Deck 5 Suite	44480 AUD pp
Privilège Suite	48240 AUD pp
Grand Deluxe Suite	58780 AUD pp
Grand Privilege Suite	60530 AUD pp

### 04-Dec-2026 to 21-Dec-2026

Superior Stateroom	25930 AUD pp
Deluxe Stateroom	27700 AUD pp
Prestige Deck 4	28940 AUD pp
Prestige Deck 5	29450 AUD pp
Prestige Deck 6	30190 AUD pp
Deluxe Suite	42730 AUD pp
Prestige Deck 5 Suite	44480 AUD pp
Privilège Suite	48240 AUD pp
Grand Deluxe Suite	58780 AUD pp
Grand Privilege Suite	60530 AUD pp

### 20-Dec-2026 to 06-Jan-2027

Superior Stateroom	29090 AUD pp
Deluxe Stateroom	31090 AUD pp
Prestige Deck 4	32530 AUD pp
Prestige Deck 5	33110 AUD pp
Prestige Deck 6	33960 AUD pp
Deluxe Suite	48290 AUD pp
Prestige Deck 5 Suite	50290 AUD pp
Prestige Deck 6 Suite	52870 AUD pp

### 15-Feb-2027 to 04-Mar-2027

Superior Stateroom	28740 AUD pp
Deluxe Stateroom	30740 AUD pp
Prestige Deck 4	32150 AUD pp
Prestige Deck 5	32720 AUD pp
Prestige Deck 6	33570 AUD pp
Deluxe Suite	47780 AUD pp
Prestige Deck 5 Suite	49760 AUD pp
Prestige Deck 6 Suite	52320 AUD pp

#### ADDITIONAL CHARGES:

Port Taxes & Fees 1260 AUD pp



# Wild Earth Travel

*Small Ships, Big Adventures*



**wildearth-travel.com**

**info@wildearth-travel.com**

## SPECIAL OFFERS

Online prices reflect the current brochure fare savings of up to 30%. Prices may change based on demand. Terms and conditions apply. This special offer is subject to availability. Please contact us for more details.



**Wild Earth Travel**

*Small Ships, Big Adventures*

**0800 945 3327** (within New Zealand) | +64 (0) 3 365 1355 | **1800 107 715** (within Australia)

info@wildearth-travel.com | **wildearth-travel.com**